

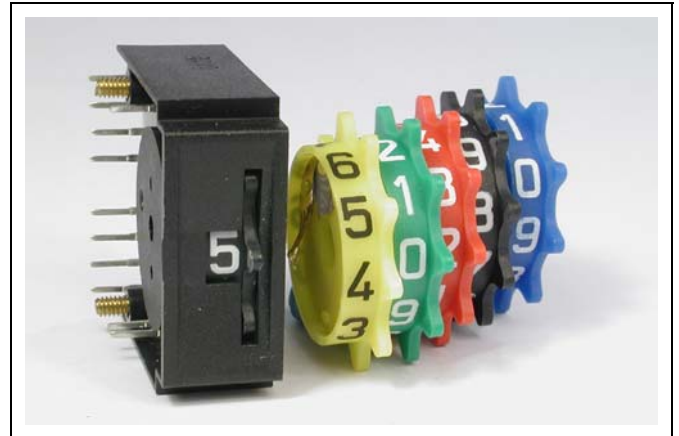
Data Sheet

Thumbwheel Switch, Type TD

The thumbwheel switch TD is designed for one-decade input and corresponds to the front dimensions of Type T (width 10.16 mm).

All other technical data is identical with that of types T, TC and TT.

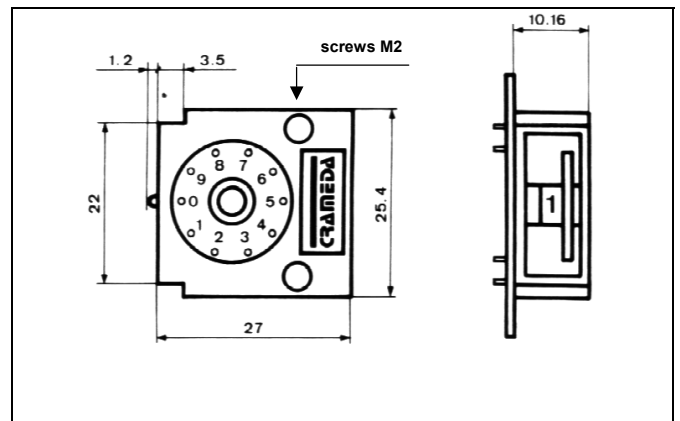
The installation depth is 27 mm.



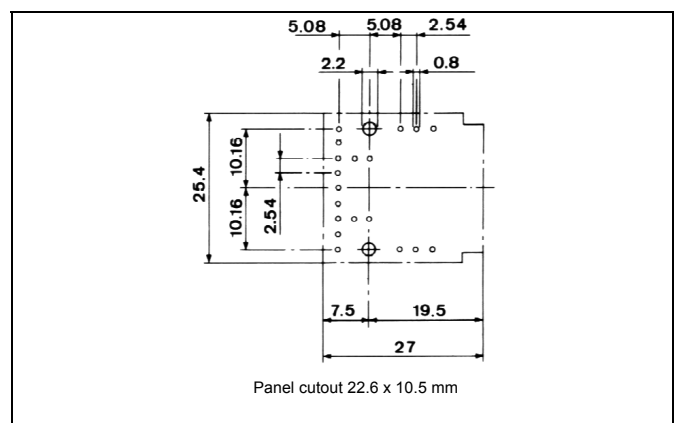
Technical Data

Rated current	≤ 0.1 A suitable for dry switching
Max. voltage	≤ 50 V=
Insulation resistance	≥ 10 ⁴ MΩ
Contact resistance	≤ 100 mΩ
Test voltage U _P contact/ contact	0.5 kV ~, 1 min.
Service life at 50 V/75 mA	> 10 ⁵ switch operations
Permissible ambient temperature δ _U	-25° . . . +70°C
IEC-climatic category 68-1	25/070/21
Materials:	
Housing	Noryl
Thumbwheel	Polyamide
PC substrate	Epoxy
PC traces	Copper ≥ 1.8 μm hard gold plated over 2 μm nickel
Contact spring	Bronze CuSn6, contact AuAgNi 71/26/3 rolled to a thickness of 10 μm
Soldering	Hand soldering (max. 5 s) max. 340°C Suitable for mechanical soldering (using a protection foil where necessary)

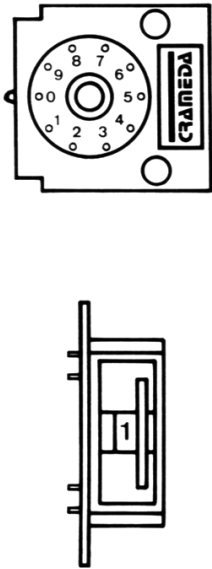
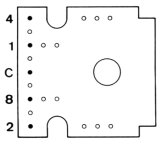
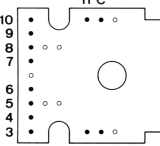
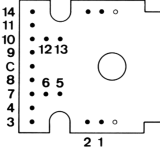
Dimensions



Hole pattern

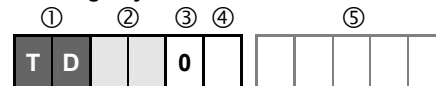


Order Number Configuration

Type ①	Switching function ②		Terminals
 <p style="text-align: center; font-weight: bold;">TD</p>	BCD-Code 10 pos. BCD compl. 10 pos. Dual-Code 16 pos. Hexadecimal BCD-Code 11 pos.	Marking 0-9 01 0-9 02 0-15 05 0-9 A-F 06 0-10 08	 View on conductor side
	Decimal 10 pos. Decimal 11 pos.	0-9 10 0-10 11	 View on conductor side
	Decimal 16 pos.	0-15 16	 View on conductor side

③ Colour of housing	black	0
④ Colour of selector disk	black	0
	red	2
	yellow	4
	green	5
	blue	6
	grey	8
⑤ Optional	End Stop	A
	Special Execution	S

Ordering Key



- ① Type
- ② Switching function
- ③ Housing black
- ④ Colour of selector disk
- ⑤ Optional

Order number (example)

Thumbwheel switch, type TD, switching function: decimal, housing black, selector disk black, with end stops, active switching between 1 and 14

